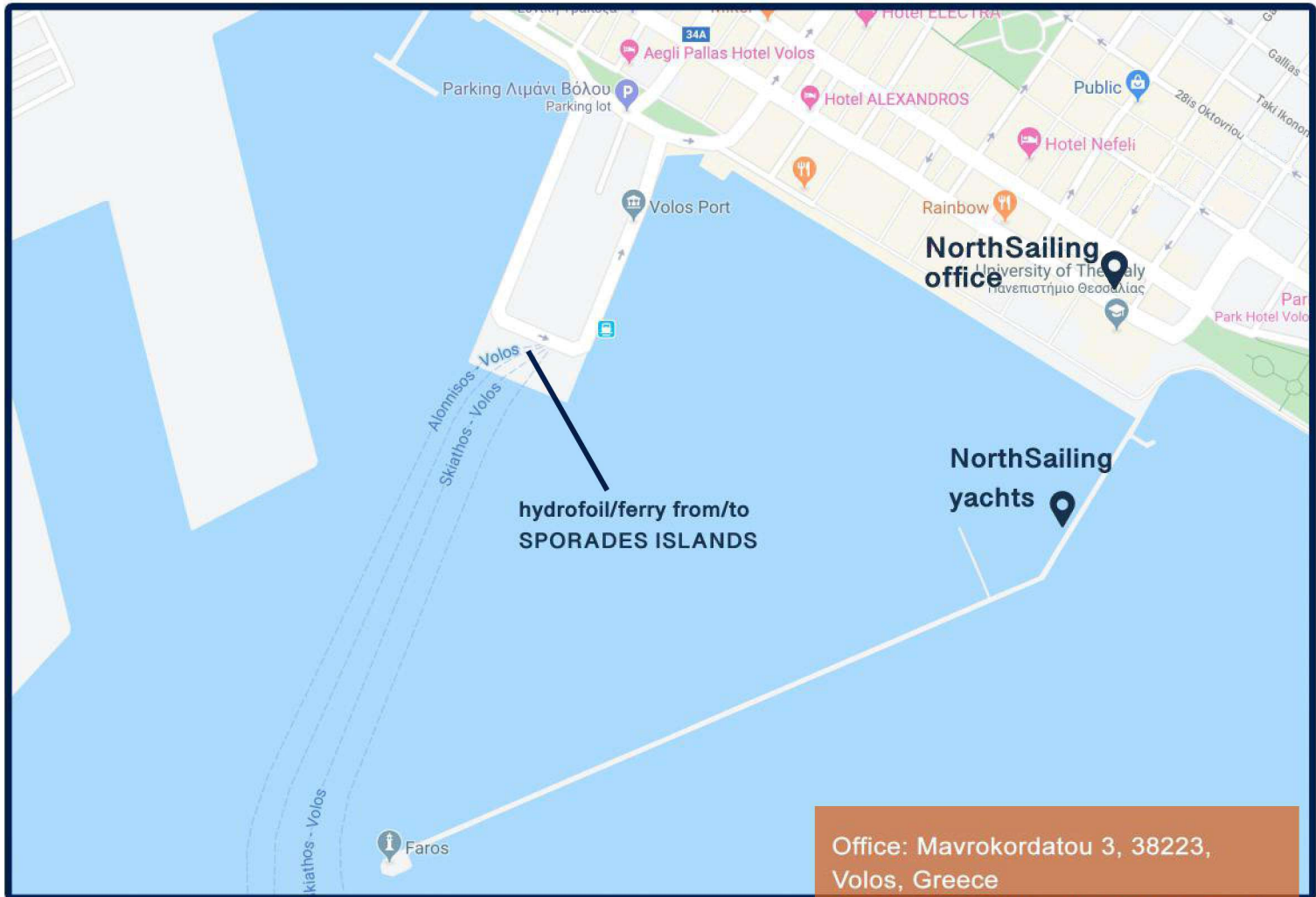


# VOLOS BASE INFO

## NORTHSAILING



### Volos useful information

- modern but historical city built in Pagasitic Gulf
- Large variety of restaurants and bars in the area near the port
- The city centre is very close to the port
- Good connections with bus to Athens and Thessaloniki airports
- Good connection with Sporades islands with hydrofoil and ferry
  
- *History: Mythical ancient hero Jason and the Argonauts set sails from here on the request of the Golden Fleece. A replica of their boat «Argo» can be found in the port.*

Office: Mavrokordatou 3, 38223, Volos, Greece

Port place: region «kordoni», port of Volos

Email: [info@northsailing.gr](mailto:info@northsailing.gr)

Base Manager: Nikolaos Politis  
Mobile phone: +306944621667

### Useful Telephone Numbers

Volos Tourist Information: (+30) 2421030940  
Police Emergency: 100, 133  
Tourist Police: (+30) 24210 76987  
Medical Emergency (Volos Hospital):  
(+30) 2421094200-20  
Port Authority: (+30) 2421038888  
KTEL Volos (Intercity Bus and urban bus):  
(+30) 2421033254  
Volos Airport: (+30) 24280 76886  
Taxi: (+30) 2421027777

# VOLOS CHECK IN/OUT INFO

**Check in time: 17:00** | **Check out time: 09:00**

**\*Important: The boat must be back to the base one day before disembarkation till 18:00 (our team is going to wait for you in the port till 20:00)**

*\*Early check in & late check out are available on extra charge. Early check in can be arranged till one week before embarkation and late check out till check in.*

## Documents required at check-in:

- Booking Confirmation/Board Pass
- Passport or Identity Card for all crew
- Skipper Licence
- Credit card with enough funds for the Security Deposit

## Security Deposit:

At check-in, you will be asked for an authorisation of your credit card (VISA or Mastercard) via POS for your security deposit. At check-out, if there has been no damage, NorthSailing will instruct their bank to release the amount that is being held as a guarantee against your credit card. The bank involved will take at least one week in order to release the amount.

## Insurance coverage

We do not offer security deposit insurance.

## Other useful things for you to know:

Charter Party: At check-in, you will be asked to sign the complete charter party, as legally required by the Greek Port Authorities. Before you leave the port you will need to have it stamped, along with the correct crelist filled in the respective document.

Fuel Tank: You will receive the yacht with a full tank of fuel. At the end of your charter, we will refill the yacht's fuel tank at your check-out and you will be charged with the amount of fuel that you have used during your charter.

Water tank: You will receive the yacht with full tank/tanks of water.

Yacht Inventory: A member of the NorthSailing team will come aboard your yacht during your check-in to go through the inventory with you, so that you can satisfy yourself with the condition of the yacht and its equipment and make sure that everything is there as per the inventory checklist. You will keep a copy of the inventory, so that you can remind yourself where is what through its detailed and informative photos.

Included in Your Charter: Bed linen, set of towels, pillows, light quilted blankets, full kitchen equipment, dinghy with oars, autopilot, GPS/plotter, one set of snorkelling gear, Greek water pilot, map/charts of the sailing region, full safety equipment.

Electricity on the Yacht: All yachts have 12V sockets (suitable for charging smartphones and tablets – not hairdryers or laptops!)

Provisions (Food Shopping): NorthSailing can arrange delivery of your provisions to the yacht for a small charge, in addition to the cost of the provisions. Ask us for the provisioning list in order for you to print it, fill it and send it back to us.

Transport from/to Volos Airport: The distance between Volos Airport and the port in Volos is 32km (approximately 30minutes).

Express bus from Volos Airport to Volos Bus Station (KTEL Intercity Bus): 5€/person